

Estate & Letting Agents

Iverson Road, West Hampstead, London, NW6



£300 pw

A bright and spacious split level second (top) floor two bedroom apartment located close to either West Hampstead or Kilburn Jubilee Line. Benefits include one large double bedroom and one small double bedroom, reception room with new carpets, recently fitted kitchen with all appliances including dishwasher, tiled bathroom with shower and wc, guest wc, available 23rd March, part furnished.

Estate & Letting Agents

Accommodation

2 Bedroom(s)

1 Reception Room(s)

1 Bathroom(s)

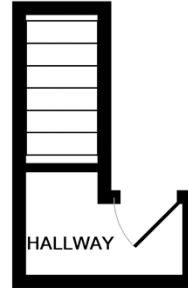
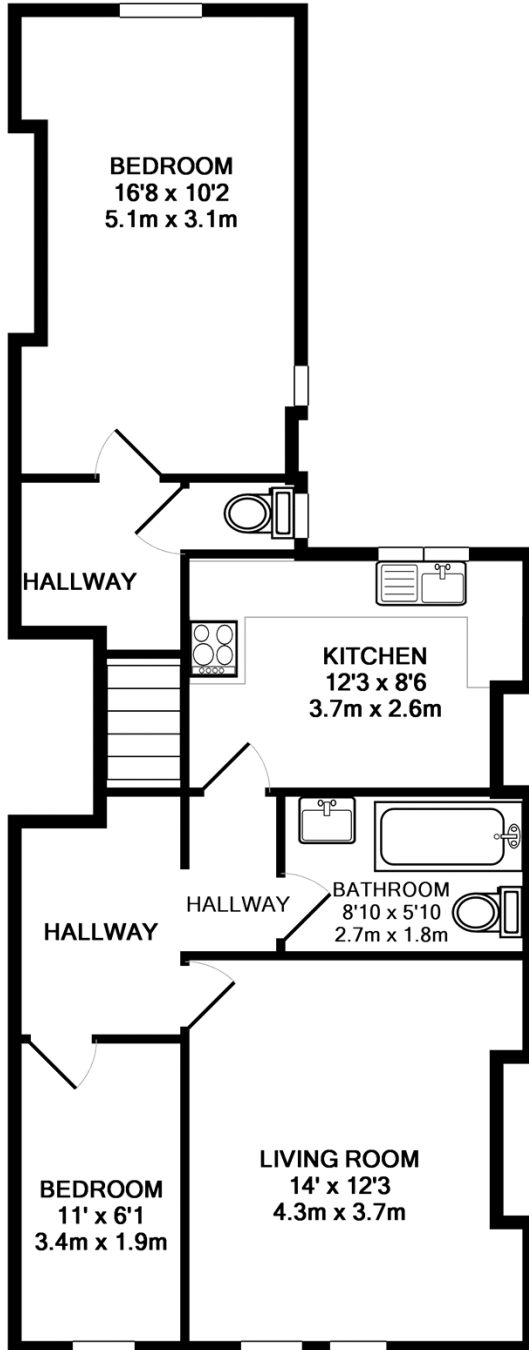
Estate & Letting Agents

Pictures



Estate & Letting Agents

Floorplans



ENTRANCE FLOOR
APPROX. FLOOR
AREA 3.6 SQ.M.
(39 SQ.FT.)

GROUND FLOOR
APPROX. FLOOR
AREA 62.9 SQ.M.
(677 SQ.FT.)

TOTAL APPROX. FLOOR AREA 66.5 SQ.M. (716 SQ.FT.)

Whilst every attempt has been made to ensure the accuracy of the floor plan contained here, measurements of doors, windows, rooms and any other items are approximate and no responsibility is taken for any error, omission, or mis-statement. This plan is for illustrative purposes only and should be used as such by any prospective purchaser. The services, systems and appliances shown have not been tested and no guarantee as to their operability or efficiency can be given

Made with Metropix ©2009

Estate & Letting Agents

Energy Performance Certificate

