

Estate & Letting Agents

Mapesbury Road, Mapesbury, London, NW2



£230 pw

Paramount offer this ground floor one double bedroom apartment on the edge of the ever popular Mapesbury conservation area. Situated moments from the Jubilee line station at Kilburn, the property benefits from a south facing reception room with bay window and double glazing, fitted kitchen with modern appliances, spacious double bedroom with fitted wardrobes, fully tiled bathroom with shower attachment and wc, available 9th May, part furnished.

Estate & Letting Agents

Accommodation

1 Bedroom(s)

1 Reception Room(s)

1 Bathroom(s)

â€¢ Resident parking available

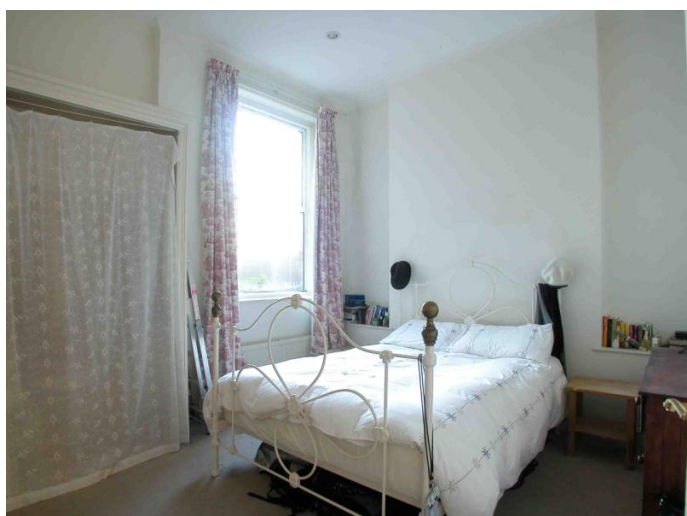
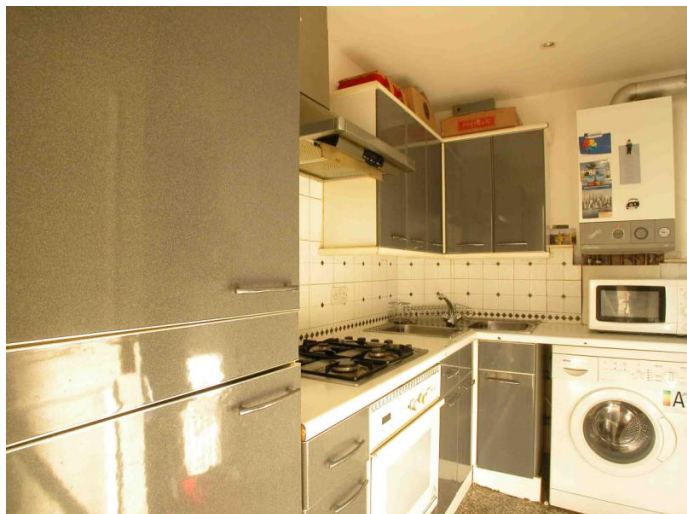
â€¢ Fitted wardrobes

â€¢ One reception room

â€¢ One bedroom

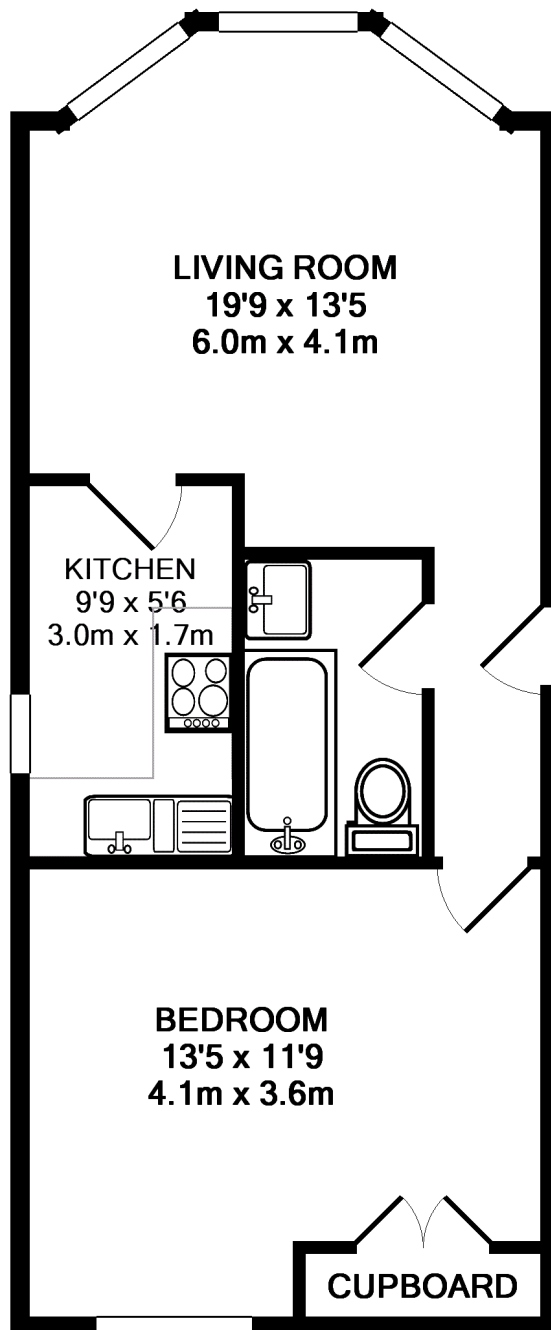
Estate & Letting Agents

Pictures



Estate & Letting Agents

Floorplans



TOTAL APPROX. FLOOR AREA 40.1 SQ.M. (432 SQ.FT.)

Whilst every attempt has been made to ensure the accuracy of the floor plan contained here, measurements of doors, windows, rooms and any other items are approximate and no responsibility is taken for any error, omission, or mis-statement. This plan is for illustrative purposes only and should be used as such by any prospective purchaser. The services, systems and appliances shown have not been tested and no guarantee as to their operability or efficiency can be given

Made with Metropix ©2008

Estate & Letting Agents

Energy Performance Certificate

