

# Estate & Letting Agents

---

Fordwych Road, West Hampstead, London, NW2



**£230 pw**

---

We offer a top floor one double bedroom apartment set within this Victorian conversion situated close to all of Kilburn's amenities. The property benefits from a bright and spacious reception room leading to balcony, modern fitted kitchen with appliances and three piece bathroom suite, communal garden, double glazed, available NOW, part furnished.

# Estate & Letting Agents

---

## Accommodation

1 Bedroom(s)

1 Reception Room(s)

1 Bathroom(s)

# Estate & Letting Agents

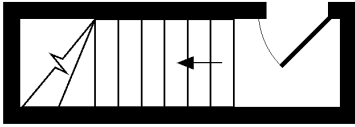
---

## Pictures

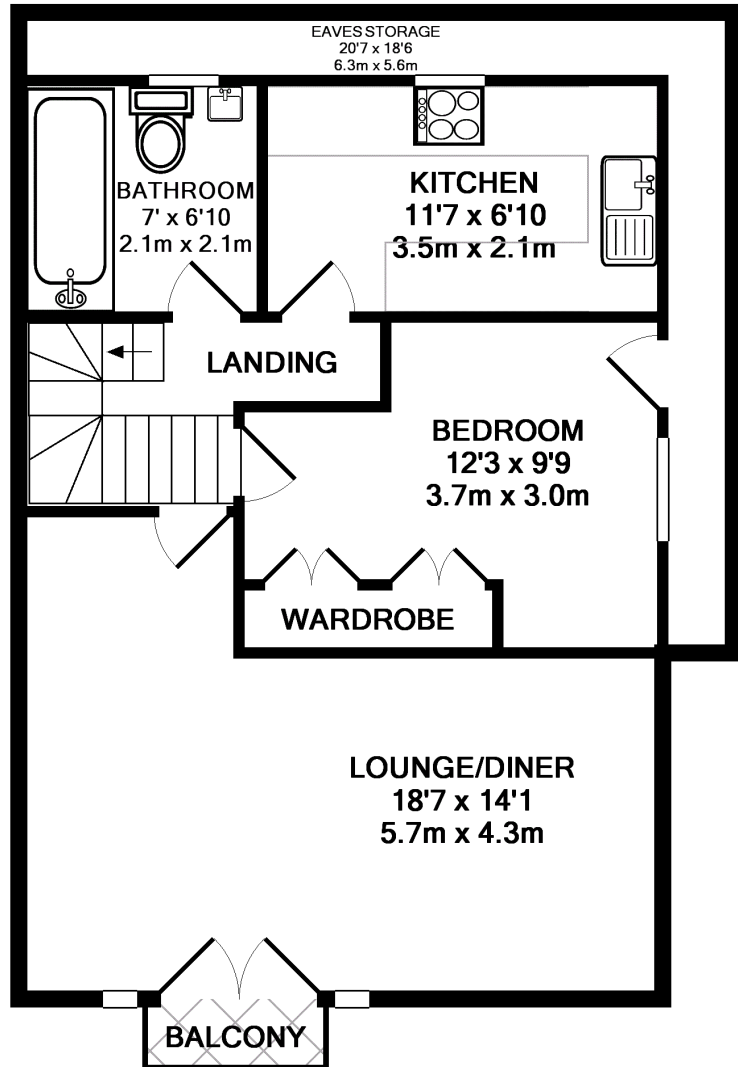


# Estate & Letting Agents

## Floorplans



1ST FLOOR  
APPROX. FLOOR  
AREA 2.7 SQ.M.  
(30 SQ.FT.)



2ND FLOOR  
APPROX. FLOOR  
AREA 52.7 SQ.M.  
(567 SQ.FT.)

TOTAL APPROX. FLOOR AREA 55.5 SQ.M. (597 SQ.FT.)

Whilst every attempt has been made to ensure the accuracy of the floor plan contained here, measurements of doors, windows, rooms and any other items are approximate and no responsibility is taken for any error, omission, or mis-statement. This plan is for illustrative purposes only and should be used as such by any prospective purchaser. The services, systems and appliances shown have not been tested and no guarantee as to their operability or efficiency can be given

Made with Metropix ©2007

# Estate & Letting Agents

## Energy Performance Certificate

