

Flats & Houses

Warwick Avenue, Maida Vale, London, W9



£240,000 Leasehold

A newly refurbished lower ground floor studio apartment set within this impressive period conversion close to Warwick Avenue tube and amenities. The apartment benefits from a spacious studio room with wood strip flooring and pull down bed, fully fitted kitchen with integrated appliances including dishwasher, tiled shower room with wc and own entrance.

Flats & Houses

Accommodation

1 Reception Room(s)

1 Bathroom(s)

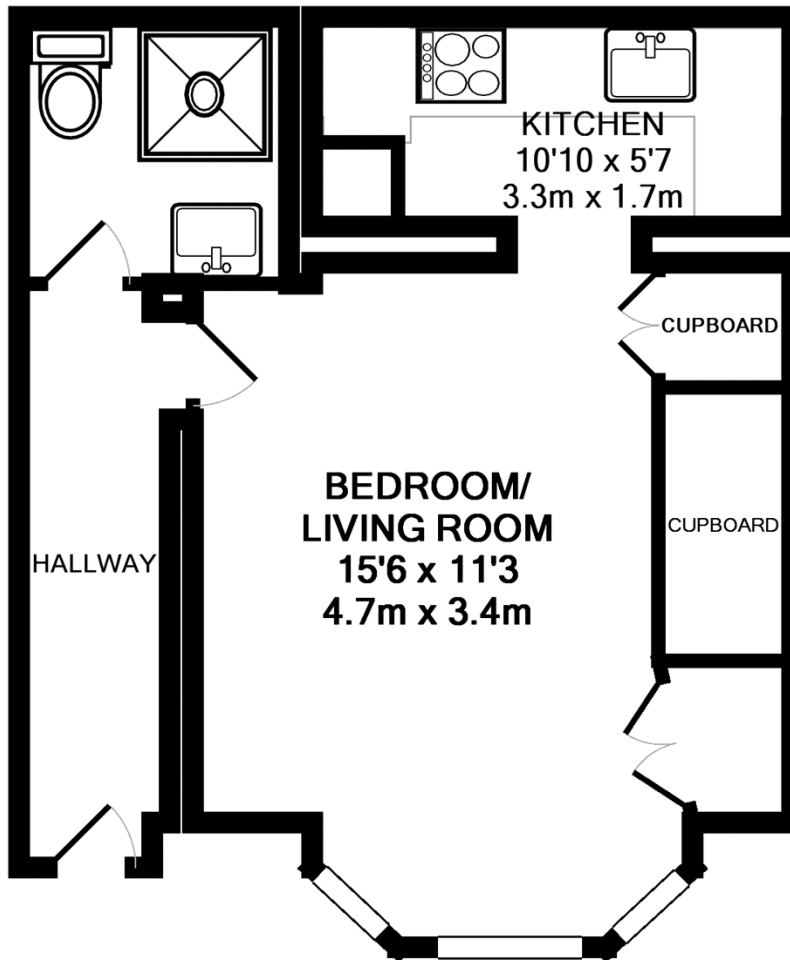
Flats & Houses

Pictures



Flats & Houses

Floorplans



TOTAL APPROX. FLOOR AREA 30.3 SQ.M. (327 SQ.FT.)

Whilst every attempt has been made to ensure the accuracy of the floor plan contained here, measurements of doors, windows, rooms and any other items are approximate and no responsibility is taken for any error, omission, or mis-statement. This plan is for illustrative purposes only and should be used as such by any prospective purchaser. The services, systems and appliances shown have not been tested and no guarantee as to their operability or efficiency can be given

Made with Metropix ©2009

Flats & Houses

Energy Performance Certificate

