

Estate & Letting Agents

Staverton Road, Willesden Green, London, NW2



£319,950 Leasehold

As Joint Sole agents, Paramount are pleased to welcome to the market this well presented top floor two double bedroom flat set in a three storey character building in Willesden Green. The property is located on a tree lined road close to all local amenities including local bus routes into London, Jubilee train links and a small selection of places to eat out in Willesden Green. The accommodation comprises of the entrance to the first floor with stairs to the second floor, a 15' front facing reception room with feature fireplace, a separate kitchen with integral appliances, master bedroom with fitted wardrobes and a second double bedroom. Further benefits include one family bathroom and one ensuite shower room, long lease and no upper chain. CALL NOW TO VIEW!

Estate & Letting Agents

Accommodation

2 Bedroom(s)

1 Reception Room(s)

2 Bathroom(s)

TWO DOUBLE BEDROOMS - TWO
BATHROOMS - LONG LEASE - NO
UPPER CHAIN - 15FT RECEPTION.

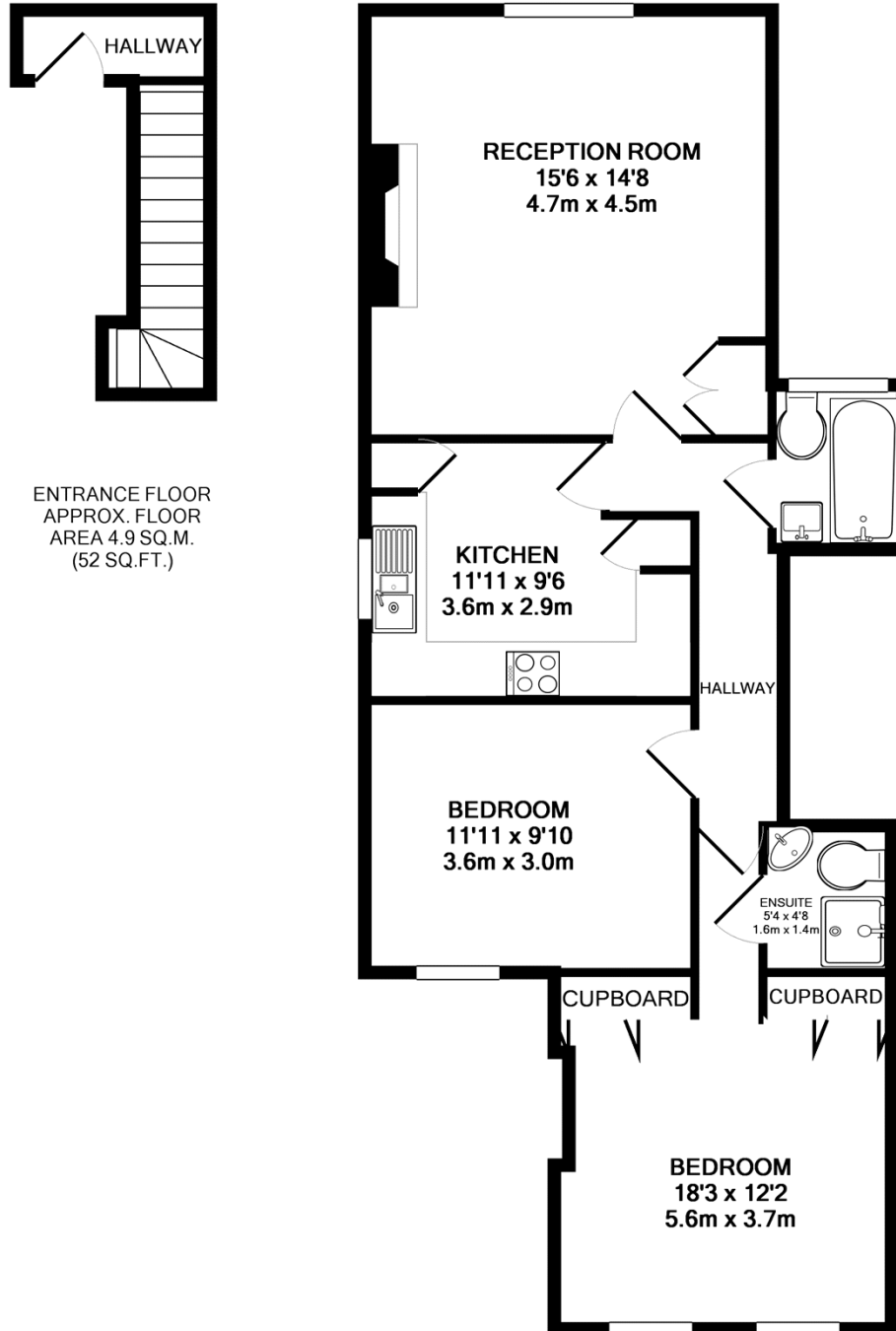
Estate & Letting Agents

Pictures



Estate & Letting Agents

Floorplans



ENTRANCE FLOOR
APPROX. FLOOR
AREA 4.9 SQ.M.
(52 SQ.FT.)

(UNTITLED)
APPROX. FLOOR
AREA 67.0 SQ.M.
(722 SQ.FT.)

TOTAL APPROX. FLOOR AREA 71.9 SQ.M. (774 SQ.FT.)

Whilst every attempt has been made to ensure the accuracy of the floor plan contained here, measurements of doors, windows, rooms and any other items are approximate and no responsibility is taken for any error, omission, or mis-statement. This plan is for illustrative purposes only and should be used as such by any prospective purchaser. The services, systems and appliances shown have not been tested and no guarantee as to their operability or efficiency can be given

Made with Metropix ©2009

Estate & Letting Agents

Energy Performance Certificate

