

London Letting Agents

Cotleigh Road, West Hampstead, London, NW6



£285 pw

A recently refurbished top floor split level one bedroom conversion close to West End Lane. Benefits include spacious reception room, double bedroom with wardrobes, fitted kitchen with all appliances including dishwasher and bathroom with shower attachment and wc, available NOW, part furnished.

London Letting Agents

Accommodation

1 Bedroom(s)

1 Reception Room(s)

1 Bathroom(s)

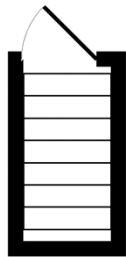
London Letting Agents

Pictures

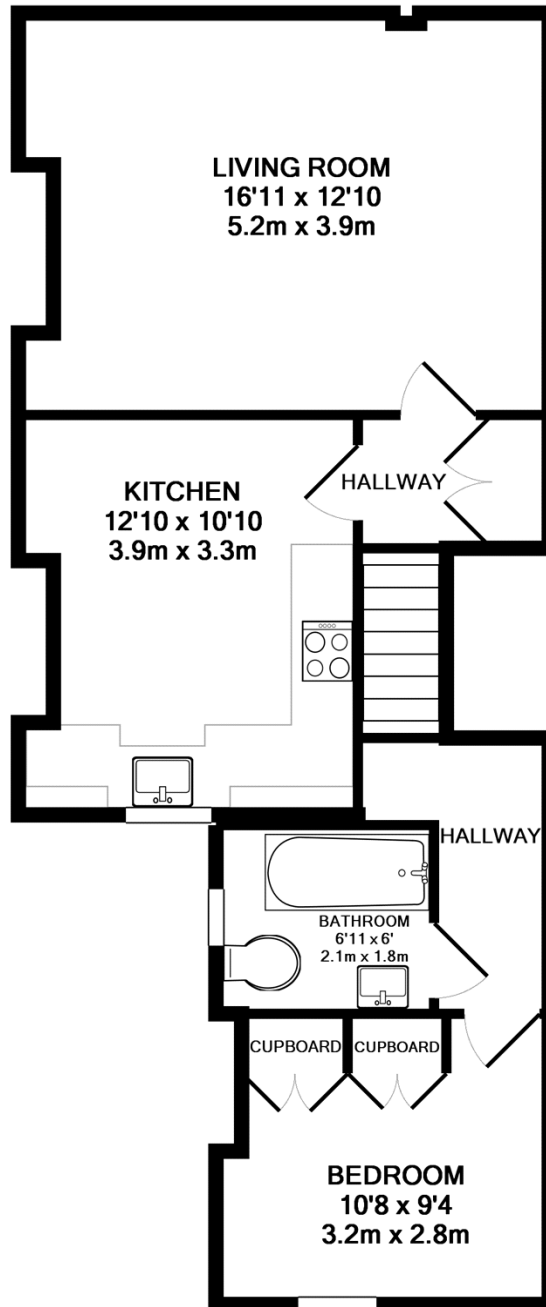


London Letting Agents

Floorplans



ENTRANCE FLOOR
APPROX. FLOOR
AREA 1.8 SQ.M.
(20 SQ.FT.)



GROUND FLOOR
APPROX. FLOOR
AREA 52.4 SQ.M.
(564 SQ.FT.)

TOTAL APPROX. FLOOR AREA 54.2 SQ.M. (584 SQ.FT.)

Whilst every attempt has been made to ensure the accuracy of the floor plan contained here, measurements of doors, windows, rooms and any other items are approximate and no responsibility is taken for any error, omission, or mis-statement. This plan is for illustrative purposes only and should be used as such by any prospective purchaser. The services, systems and appliances shown have not been tested and no guarantee as to their operability or efficiency can be given

Made with Metropix ©2009

London Letting Agents

Energy Performance Certificate

